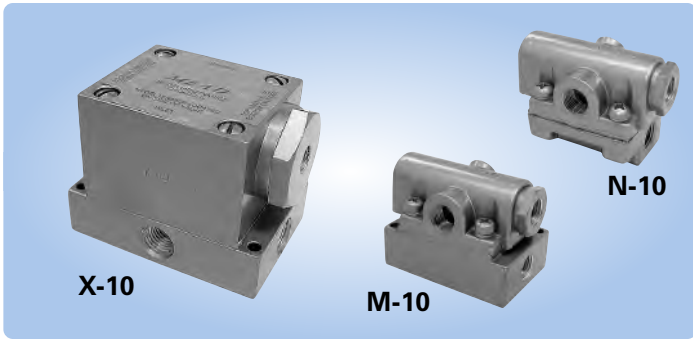


# Dura-Matic 4-Way Valves



## Built-In Speed Controls

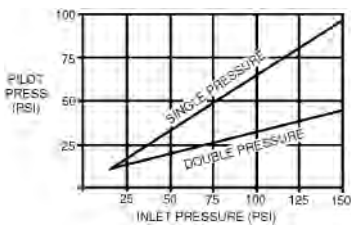
Dura-matic 4-way valves not only control cylinder direction but also control cylinder rod speed. Most models include easy-to-use built-in flow controls that permit the user to establish cylinder speeds right at the directional valve.

## Remote Air Piloting

Air piloting is a simple and economical way to operate cylinders or other air driven devices; it eliminates the need for electric wiring or solenoids. Dura-matic models are available as either pressure or bleed remote piloting depending upon the model selected. Single piloted models require one remote pilot valve and double piloted models require two.

### Pressure Piloted Valves:

These valves shift when pressurized air travels from a remote pilot valve to the pilot port of the Dura-matic valve. The table shows the minimum allowable pilot pressures.



### Bleed Piloted Valves:

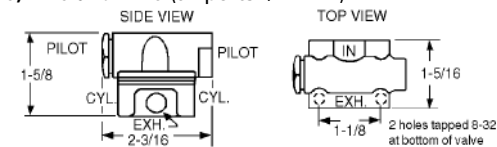
Bleed piloted models output air from the pilot port(s). When the remote pilot valve is actuated the air is exhausted, causing the valve to shift. In contrast to pressure piloting, bleed pilot valves do not need separate air supplies. However, they do continue to bleed air as long as they are actuated. Below are two remote bleed pilot valves:

Model	Description	Length	Width
404A	Bleed Limit Valve; 1/8" NPT Fitting	2 1/4"	1/2" Hex
405A	Bleed Limit Valve; 1/4" OD Tubing	2 1/4"	1/2" Hex

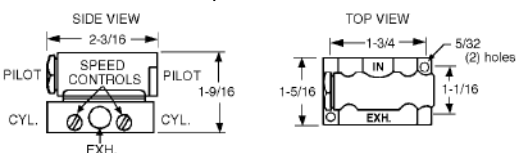
A wide variety of pilot operators are provided in the Micro-Line valves section (pages 26-27). This line of valves can be used to remotely pilot either the pressure or the bleed type.

## Dimensions

L-10, N-10, T-10 and V-10 (all ports 1/8" NPT)



K-10, M-10, O-10 and U-10 (all ports 1/8" NPT)



Size (")	Model	Function	Flow*	C <sub>v</sub>
1/8	K-10	Single Pressure	13.6	.24
1/8	M-10	Double Pressure	13.6	.24
1/8	O-10	Single Bleed	13.6	.24
1/8	U-10	Double Bleed	13.6	.24
1/4	W-10	Single Pressure	48.5	.63
1/4	X-10	Double Pressure	48.5	.63
1/4	Y-10	Single Bleed	48.5	.63
1/4	Z-10	Double Bleed	48.5	.63
1/8	L-10‡	Single Pressure	10.1	.11
1/8	N-10‡	Double Pressure	10.1	.11
1/8	T-10‡	Single Bleed	10.1	.11
1/8	V-10‡	Double Bleed	10.1	.11

\* Flow at 100 PSI Inlet pressure (in SCFM)

‡ These models do not have built-in flow controls

### Technical Specifications

Pressure : 20 to 150 PSI (min. 30 PSI on W-10)

Temperature : -40°F to +150°F

Lubrication: Petroleum base oil

Filtration: 40 micron

### Construction

Type : Slide (wear compensating nylon)

Dynamic Seals : Buna N Block Vs

Plate: Hardened and lapped aircraft quality steel

Exhaust Ports: Common to both cylinder ports

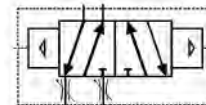
Speed Controls: Needle type with check valve to allow free out flow and controlled exhaust flow

## Valve Symbols

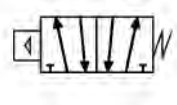
K-10 & W-10



U-10 & Z-10



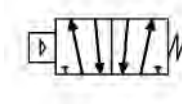
T-10



M-10 & X-10



L-10



V-10



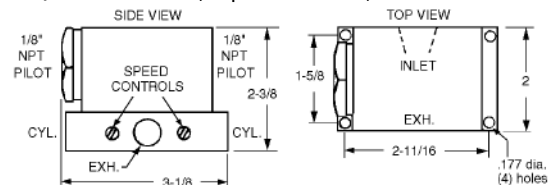
O-10 & Y-10



N-10



W-10, X-10, Y-10 and Z-10 (all ports 1/4" NPT)



404A



405A