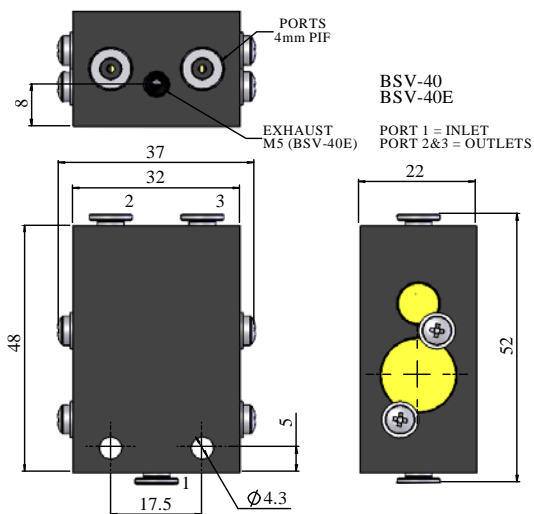
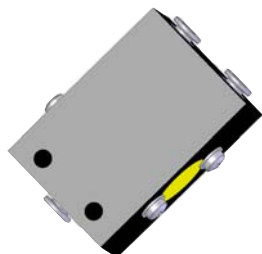


The BSV-Series provides alternating outputs from a single input signal. Each unit has two outlet ports which are selected alternately by applying air, exhausting, and re-applying an air signal to the inlet or signal port. BSV-Series products are ideally suited for manufacturing and automation applications.

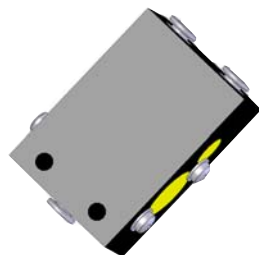
The BSV - Series compliment the following:

- CSV 2-Hand Controllers
- AP and CP Press Stands
- Clamp Cylinders and Collet Fixtures

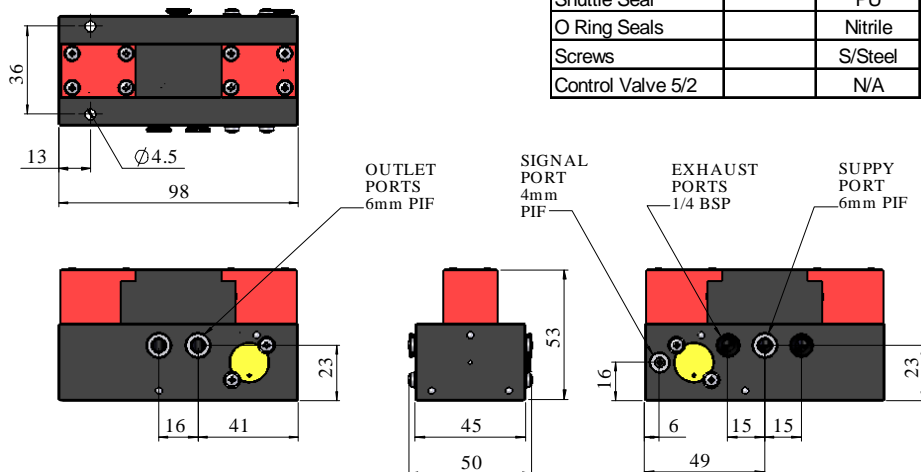
## BSV-40



## BSV-40E

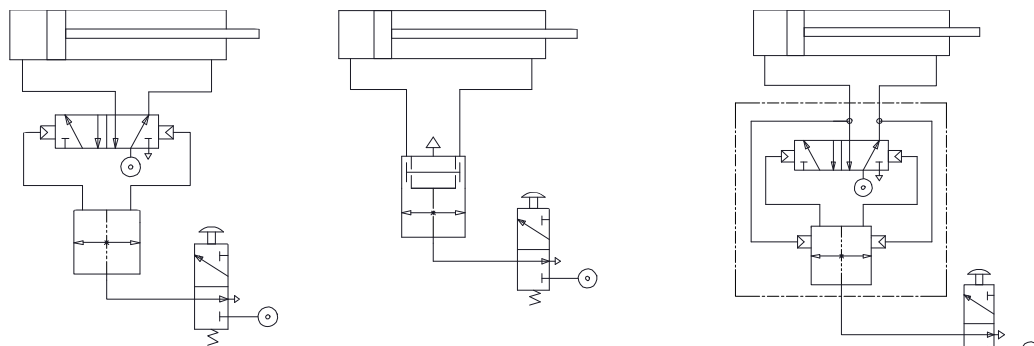
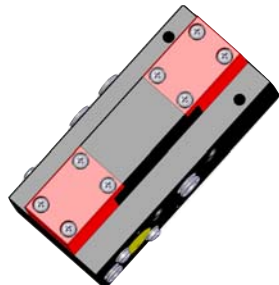


With New Exhaust Feature



Note:  
The input signal must be fully exhausted to allow the BSV valve to switch over correctly

## BSV-60P



**BSV- 40 Uses:**  
Pilot source for Power Valves  
Flip-Flop Signals  
Low Volume Switching  
Interchangeable with Mead P90-001-832 Valves

**BSV- 40E Uses:**  
Control of Small to Medium Actuators  
Pilot source for Power Valves  
Flip-Flop Signals

**BSV- 60P Uses:**  
Control of Medium to Large Actuators with Positive Feedback from the Outlet Ports for precise switching  
Interchangeable with Mead P05-600-685 Valves

Technical Specification	Units	BSV- 40	BSV- 40E	BSV- 60P
Operating Pressure	bar (Min.)	2.5	2.5	3
	bar (Max)	8	8	8
Media		Air or Inert Gas		
Flow Rate to Atmos. @ 7 bar	l/min	80	80	450
Cv		0.07	0.07	0.44
Ambient Temp.	°C (Min.)	-10	-10	-10
	°C (Max)	+50	+50	+50
Weight	Kgf	0.105	0.107	0.505

Materials	Condition	BSV- 40	BSV- 40E	BSV- 60P
Housing	Anodised	Aluminium	Aluminium	Aluminium
End Caps		Brass	Brass	Brass
Shuttle	Cr Plated	S/Steel	S/Steel	Brass
Shuttle Seal		PU	PU	Nitrile
O Ring Seals		Nitrile	Nitrile	Nitrile
Screws		S/Steel	S/Steel	S/Steel
Control Valve 5/2		N/A	N/A	VM21-0505